

# KETTLEFIELDS PRIMARY SCHOOL

## NEWSLETTER

<https://www.kettlefields.cambs.sch.uk/>

**19<sup>th</sup> September 2025**



### NO CELEBRATION ASSEMBLY NEXT FRIDAY

On Friday 26<sup>th</sup> September, instead of our usual celebration assembly, we are holding a coffee afternoon in support of Macmillan Cancer. All are invited, we hope to see you there.

Donations of cakes will be gratefully received (no nuts); please bring them to the school on 26<sup>th</sup> September.

**MACMILLAN  
CANCER SUPPORT**

## COFFEE AFTERNOON

FRIDAY 26<sup>TH</sup> SEPTEMBER AT 1.30PM

WE WOULD LOVE TO INVITE ALL  
PARENTS/CARERS/RELATIVES TO OUR MACMILLAN  
COFFEE AFTERNOON. PLEASE COME ALONG AND ENJOY  
A CUPPA AND A SLICE OF CAKE.

DONATIONS OF CAKES WOULD BE GLADLY ACCEPTED  
ON THE MORNING OF OUR EVENT, PLEASE

### ONLINE PARENT CONSULTATIONS – BOOKING NOW OPEN

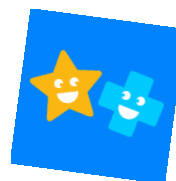
Our Autumn term parent consultations are now available to book. The school uses a system called School Cloud to conduct virtual parent consultations.

Please visit <https://kettlefields.schoolcloud.co.uk> to book your appointments. Login with the following information:

Student's First Name  
Student's Surname

### DOODLE MATHS

We've attached a letter with information on how to make the most of Doodle Maths. Doodle Maths is a fantastic resource with fun engaging activities. All Kettlefields children in years 1 – 6 all have a Doodle account and we encourage them to login at home and get 'doodling'! For children in Reception, Doodle logins will be sent later in the term.



### DIARY DATES

#### 19<sup>th</sup> September

- Rocksteady
- Celebration Assembly  
1.45pm (years 1 – 6)

#### 22<sup>nd</sup> September

- Singing Lessons &  
Singsational Club

#### 23<sup>rd</sup> September

- Flu Vaccinations
- After School Football Club  
3.30-4.30pm
- Forest School Year 2

#### 24<sup>th</sup> September

- Flute Lessons
- Piano/singing lessons

#### 26<sup>th</sup> September

- Rocksteady
  - Macmillan Coffee Afternoon  
1.30-2.15pm
- NO CELEBRATION ASSEMBLY

#### 30<sup>th</sup> September

- Cross Country at Links Golf  
Club (team from Years 5 &  
6) 3.00-5.00pm

#### 2<sup>nd</sup> October

- Out of this World Lunch

#### 3<sup>rd</sup> October

- Harvest Festival 1.45pm &  
collection for Foodbank
- PTFA Quiz Night 7.00pm

#### 5<sup>th</sup> November

- PTFA Fireworks  
(No After School Club)

# KETTLEFIELDS PRIMARY SCHOOL NEWSLETTER

*Continued....*

## AFTER SCHOOL DODGEBALL CLUB – YEARS 1 & 2

After half term, we will be offering an after school dodgeball club on the following Tuesdays:

- 4<sup>th</sup> November
- 11<sup>th</sup> November
- 18<sup>th</sup> November
- 25<sup>th</sup> November
- 2<sup>nd</sup> December
- 9<sup>th</sup> December (last one)

This will be available to pupils who will be in years 1 & 2. The club will be run from 3.30pm until 4.30pm and pupils who are signed up to attend will need to bring an afternoon snack and trainers. There are limited spaces available. Parents are able to sign their child up to attend on the School Comms app, under the 'payments' section.

## DONATIONS FOR THE PTFA

Don't forget to book your tickets for the quiz night on 3<sup>rd</sup> November. You can find more information on the PTFA Newsletter (see the separate attachment).

Donations of items for the Quiz night and for our Christmas hamper would be much appreciated. Please bring your donations to the school office; we have plenty of children's things so just items for the adult raffles are needed. Thank you in advance for your support.

## SCHOOL PHOTO SUBSCRIPTION CLOSING SOON

This year we are trialling a new scheme for photographs. Registrations are now open at [www.happydays.photos](http://www.happydays.photos) and are available until Sunday 21<sup>st</sup> September 2025.



## FREE FLUTE TASTER LESSON AVAILABLE TO YEARS 1 & 2

Our flute teacher, Mrs Dunton is visiting Kingfishers and Woodpeckers Classes for a flute class demonstration over the next couple of weeks. She is offering a free flute taster lesson for children in Years 1 & 2. If you are interested, please complete the form (see the attached letter for further information).

## THE NATIONAL CHILD MEASUREMENT PROGRAMME (NCMP)

Please see the email sent to all parents of children in Reception and Year 6 this week. Parents should contact the NCMP team directly if they do not wish to participate.

## HARVEST FESTIVAL



We will hold our Harvest collection on Friday 3<sup>rd</sup> October with focus on giving thanks for our food and thinking of those in need. We will be promoting our core values of kindness and love, by setting up a Harvest collection and donations will be delivered to the local food bank. If you would like to contribute, please send your child into school with a donation in the form of an item of non-perishable food on 3<sup>rd</sup> October. Instead of the usual Friday Celebration Assembly, parents are invited to our Harvest Assembly at 1.45pm.

Page 2 of 9

# KETTLEFIELDS PRIMARY SCHOOL NEWSLETTER

Continued....



**Aloha!**

JOIN US FOR

**AFTER SCHOOL CLUB'S HAWAIIAN PARTY**

WEDNESDAY 24TH SEPTEMBER

PLEASE BOOK TO ATTEND ASC ON THIS DAY, VIA THE SCHOOL GATEWAY APP

PLACES ARE LIMITED

## AFTER SCHOOL CLUB ACTIVITIES

Week Beginning 22<sup>nd</sup> September 2025

Breakfast and After School Club are available for bookings on the School Gateway App.

MONDAY	Bird Feeders
TUESDAY	Games
WEDNESDAY	Hawaiian Party
THURSDAY	Art & Crafts
FRIDAY	Forest School



**OUT OF THIS WORLD**

THURSDAY 2<sup>ND</sup> OCTOBER

**Rocket Booster Sausages**  
Or  
**Meteorite Vegetable Nuggets**  
Served with  
**Flying Saucer Potatoes & Saturn Spaghetti Rings**

Followed by  
**Cosmic Cake, Melon Moons or Star Jelly**

**LUNCHTIME CO<sup>®</sup>**

## SCHOOL MEALS

In a change to the usual lunch menu, we are having an 'Out of this World' lunch on Thursday 2<sup>nd</sup> October. There's no need to book in advance; if you pay for school meals, please make the usual payment via Arbor before the day.

Coming soon - look out for our new lunch menu which starts after the half term break. We will send it out to parents and publish on our school website nearer the time.

*Continued....*

## JACK AND THE BEANSTALK



Our Reception pupils have had another busy week!

Using Jack and the Beanstalk as their focus text, they created giants in Drawing Club, painted beanstalks in Art, and practiced shapes to help with their handwriting.



### Story telling



*The duplo was used to create the Giant's castle as the setting.*



*It was lovely to see this little group, retelling the story of Jack and the Beanstalk using the puppets. They each took on one of the characters and remembered the key parts so well.*

They escaped the giant in PE, danced through the story in Music and Movement, and even played sound games with homemade shakers in Phonics. What an exciting week of learning. Well done, Robins!



# KETTLEFIELDS PRIMARY SCHOOL NEWSLETTER

*Continued....*

---

## PEREGRINES POETRY

Peregrines have been working on their poetry, particularly the skills of reading, interpreting and performing. This week, they have moved towards composing their own poems based on the W.H. Auden poem, 'Night Mail' which is about the mail train travelling up to Scotland throughout the night.

They have enjoyed writing some parody poems based around the same theme, rhythm and rhyme scheme, but this time with the subject matter of 'Junk Mail'!

Here is a taster of their work, with a poem written by the whole class:

*This is the junk mail, landing on the mat,  
Wasting his time and startling the cat,*

*Adverts for kebabs, adverts for the chippy,  
A beauty pamphlet flogging loads of half price lippy,*

*Pulling on his slippers with a cavernous yawn,  
Grumpy in his dressing gown, snarling at the dawn.*

*Past kitchen sink and unwashed dishes,  
Dreaming of a letter full of handwritten wishes,*

*Grunting noisily as he stoops,  
Collecting all the rubbish from the marketing groups,*

*Fliers quiver as the bin approaches,  
Terrified of being with the flies and roaches.*

*Dawn freshens, the moaning's done,  
Towards the tattered arm-chair he descends,  
Slurping coffee ("Nescafe, extra strong and four sugars if you please!") from  
his cracked 'World's Best Dad' mug. The warmth and strength of his delicious  
brew gives him just enough energy to switch on the telly so that he can begin the  
long day's work of shouting at it...*

*Class Poem by the Peregrines*

# KETTLEFIELDS PRIMARY SCHOOL NEWSLETTER

*Continued....*

## APPLICATIONS FOR SECONDARY SCHOOL

If you have a child in Year 6, you need to apply now for a school place:

[Secondary school admissions - September 2026 | Cambridgeshire County Council](#)



# Apply now

## for a Secondary school place for September 2026

Contact the Admissions Team by telephone 0345 045 1370

If your child will be aged 11 by **31<sup>st</sup> August 2026**



**SCAN ME**



**You need to apply NOW for a school place**

For further information please visit or contact your local School

**Apply by 31<sup>st</sup> October 2025**

[Secondary school admissions - September 2026 | Cambridgeshire County Council](#)

ALC2605, New Shire Hall, Emery Crescent, Enterprise Campus, Alconbury Weald, PE28 4YE  
or email [admissions@cambridgeshire.gov.uk](mailto:admissions@cambridgeshire.gov.uk)

[www.cambridgeshire.gov.uk](http://www.cambridgeshire.gov.uk)

# KETTLEFIELDS PRIMARY SCHOOL NEWSLETTER

*Continued....*

10% EARLY BIRD  
DISCOUNT WHEN  
BOOKING BY 30  
SEPTEMBER AND  
USING CODE EB10

## BONFIRE & LOW BANG FIREWORKS

AT KETTLEFIELDS SCHOOL  
WEDNESDAY 5<sup>TH</sup> NOVEMBER

GATES OPEN AT 5.30PM

BONFIRE - 6.30PM | FIREWORKS - 7PM

FAIRGROUND, FOOD & BAR, LIGHT-UP TOY STALL  
& HOT DRINKS AVAILABLE

ADULTS £10 | CHILDREN £5 | UNDER 2'S FREE

£22 - 2 ADULTS, 1 CHILD | £25 - 2 ADULTS, 2 CHILDREN

£28 - 2 ADULTS, 3 CHILDREN

FOR MORE INFORMATION AND TO BOOK YOUR TICKETS PLEASE  
VISIT THE FOLLOWING WEBSITE:

**[WWW.KETTLEFIELDSFIREWORKS.NET](http://WWW.KETTLEFIELDSFIREWORKS.NET)**

With thanks to our sponsors:

**Precision**  
Carpentry & Joinery

**TY**  
THOMAS & YOUNG  
WEALTH MANAGEMENT LTD  
CHARTERED FINANCIAL PLANNERS

Page 7 of 9

Continued....

## BUILD A GUY Competition



Win a £20 book token

A great half term activity!

All entries to be at school on the morning of 5<sup>th</sup> November ready for judging



## CHRISTMAS JUMPER JUMBLE SALE

21ST NOVEMBER  
FROM 1.30PM  
SCHOOL HALL



ALL DONATIONS TO BE WASHED & DELIVERED TO THE SCHOOL OFFICE BY 20<sup>TH</sup> NOVEMBER

### LUNCHTIME CO



## WE ARE HIRING

### Catering Assistant

**Kettlefield Primary School**  
Stetchworth Road, Newmarket,  
CB8 9UH  
**10 hours per week**  
Monday to Friday  
**Term Time Only**



*More information available in the description*

**How to Apply:**  
Send a copy of your CV to  
HR@lunchtime.co.uk quoting:  
**Catering Assistant at Kettlefield**

In line with the requirements of the Asylum and Immigration Act 1996, all applicants must either be eligible to live and work in the UK or must obtain permits to work in the UK prior to application. Documented evidence of eligibility will be required from candidates as part of the recruitment process. All successful applicants will be required to undertake an enhanced DBS check.



## Juniors hockey

Welcoming new players of  
all abilities  
Age 4-16

Sundays  
Newmarket Leisure Centre  
Astro

2025/26 season

**Sun 14 Sept - Sun 14 Dec**  
**Sun 11 Jan - Sun 29 March**

10-11am ages 4-10 (year 5)  
11-12pm age 10+ (year 6)



Goalkeeper training also available.



**For more information:**  
[www.newmarkethockeyclub.co.uk/juniors](http://www.newmarkethockeyclub.co.uk/juniors)  
[newmarkethcjuniors@gmail.com](mailto:newmarkethcjuniors@gmail.com)

# KETTLEFIELDS PRIMARY SCHOOL NEWSLETTER

*Continued....*



## SENDIASS

### Cambridgeshire, Peterborough & Rutland

**Cambridgeshire, Peterborough & Rutland SENDIASS** provides information, advice and support to parents, children and young people regarding Special Educational Needs and Disabilities.

**SENDIASS offers:**

- Impartial advice and information about all aspects of Special Educational Needs and Disabilities.
- Advice and support for parents, children and young people who are navigating the Special Educational Needs processes.
- Advice and support for parents and young people to work collaboratively with schools, other educational settings, health and children's services, and other professionals involved in individual cases.
- Inform and signpost parents and young people to all available support services and organisations.
- Advice and support for parents and young people in resolving disagreements in a timely manner and supporting through mediations and tribunals where necessary.


Please contact us for further information, advice and support.

**Contact: 0300 365 1020**

or email

**Cambridgeshire & Rutland = [sendiass@cambridgeshire.gov.uk](mailto:sendiass@cambridgeshire.gov.uk)**

**Peterborough = [sendiass@peterborough.gov.uk](mailto:sendiass@peterborough.gov.uk)**



*Special Educational Needs and Disabilities Information, Advice and Support*

